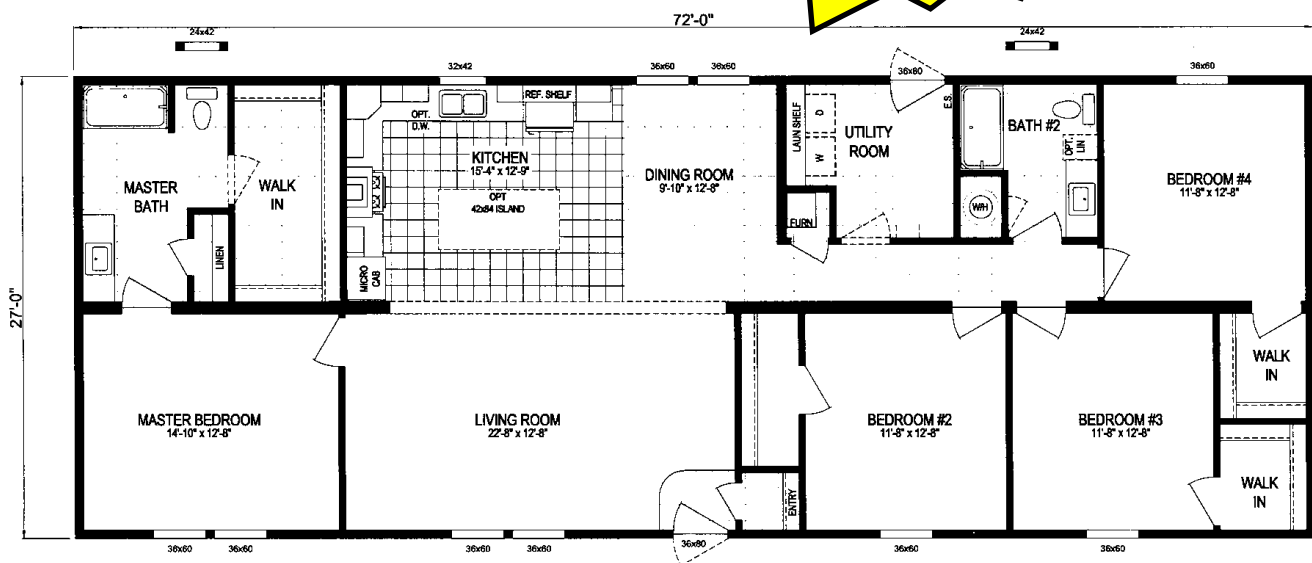


## ***The “MONTANA” by Clayton Homes***



### ***FREEDOM SERIES ~ THE “MONTANA”***

- 1,944 Sq. Ft.
- 4BR/2BA
- Open Floorplan
- Black Appliances
- Gray Cabinets
- Dining Area
- Sliding Patio Door
- Spacious Walk-in Closets
- Vinyl Siding
- Shingled Roof

**NU-TREND** HOMES

“ FOLLOW THE TREND TO NU-TREND ”

## ***The “MONTANA” by Clayton Homes***



6363 Grover Street • Omaha, NE 68106 • 402-733-8900 • [www.nutrendomaha.com](http://www.nutrendomaha.com)  
Mon - Fri 8am to 5pm • Closed Saturday and Sunday • *By Appointment After Hours*

**NU-TREND** HOMES

“ FOLLOW THE TREND TO NU-TREND ”

## ***The “MONTANA” by Clayton Homes***



6363 Grover Street • Omaha, NE 68106 • 402-733-8900 • [www.nutrendomaha.com](http://www.nutrendomaha.com)

Mon - Fri 8am to 5pm • Closed Saturday and Sunday • *By Appointment After Hours*